



DEFFRO  
HOME



*„We take care of ecology, high quality and precision of execution. Modern design combined with many years of experience in the production of heating equipment guarantees the satisfaction of our esteemed customers for many years.“*

A stylized, handwritten signature in black ink, consisting of a large 'R' and 'D' intertwined.

Robert Dziubeta  
President of the Board





## ABOUT US

DEFRO was founded in 2000, although its origins date back to the 70's. At the beginning of the activity the company was involved in the provision of locksmith and welding services. Over time, the company's offer included the production of central heating boilers. Currently the company is a leader among heating equipment manufacturers in Poland and one of the largest in Europe.

DEFRO has a modern, computerized manufacturing facility. The constantly expanding and modernized machine park consists of several technological blocks. DEFRO has the advantage of having its own design office, which enables the complete realization of the project, from conceptual design to serial production. All products are manufactured from start to finish in the company.

DEFRO puts great emphasis on after-sales service and warranty. With an extensive network of technical support Service Center quickly and efficiently responds to requests from customers, and thus ensures trouble-free operation of our products. The company is constantly developing its external service network and also cooperates and does trainings for distributors and installers.

The next stage of the company's activity is the introduction of the DEFRO Home range of fireplace inserts, fireplaces and pellet stoves. These products meet the highest quality and safety standards. Specially designed achieve a high efficiency of 83%.

### Characteristics of stoves and fireplace inserts:

- + unique vision of fire
- + modern design
- + Firing chamber lined with high-quality heat resistant concrete
- + vitroc ceramic glass with screen printing
- + models with different glazing: straight, side, raised up, semi-circular
- + system of post-combustion of flue gases
- + high efficiency
- + inserts with central air supply
- + primary and secondary air regulation with one slider
- + fuel: dry leaf wood (max 20% moisture), wood briquette

Explanation of pictograms used in the catalog:



Power of heating device



Weight of heating device



The construction contains cast iron elements



Diameter of exhaust outlet



Thermal efficiency of the device



Rotary flue



Maximum length of wood logs



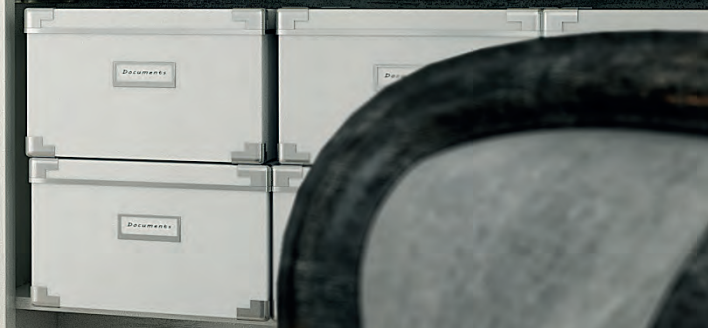
Power range of the heating device





LOVE

EVE



## COLD HANDLE SYSTEM

All DEFRO HOME products are equipped with a system called. „Cold door handle“. Convenience is based on keeping handle cold while wood is burning, which allows to load wood without the risk of burns.

## FIREPLACE GLASS

The glass used in the stoves and fireplace inserts of the DEFRO Home series is a high quality ceramic sinter in a modern form with an impressive screen printing and a company logo. Its resistance is up to 750 ° C.

## ROTARY FLUE

## CLEAN GLASS SYSTEM

An active glass cleaning system is a unique way to bring hot air to the fireplace, which keeps the glass clean and clear.

## CENTRAL AIR INLET FROM OUTSIDE AND ITS ADJUSTMENT

Fireplaces and fireplace inserts are equipped with a slider for precise control of the air involved in combustion. The devices also have a connection to the throttles automatically adjustable, which can also be used to connect air from the outside.

## ACCUMULATION OF ASH

Fireplace inserts and stoves in standard have a grate made of cast iron or stainless steel and ashpan, allowing quick and easy removal of residual ash

## ECOLOGY

The stoves' chambers and fireplace inserts are designed so that the wood burning process produces the smallest amount of impurities. Ceramic catalysts burn harmful particles and precisely directed air is involved in the combustion of most impurities.

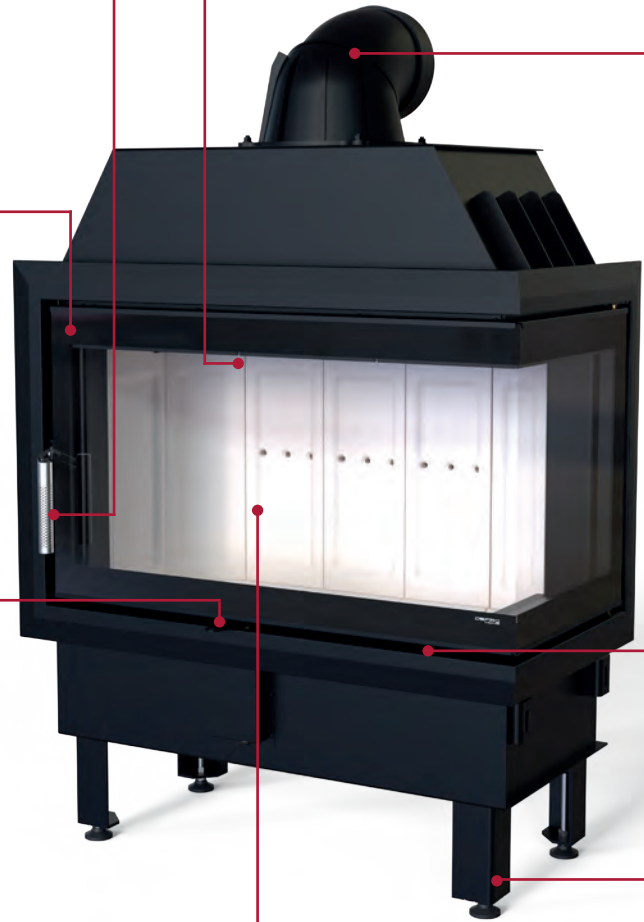
## FEET FOR HEIGHT ADJUSTMENT

## HEAT RESISTANT CONCRETE

In fire chambers of stoves and fireplaces from DEFRO Home series a best quality heat resistant concrete from leading European manufacturer was applied. Its unique chemical composition allows afterburning of soot what significantly simplifies the maintenance of the fireplace. Its resistance reaches 1500 °C. This material is applied in specialist smelting, casting furnaces and other industrial applications which require the high thermal resistance.

## ASSEMBLY CONVENIENCES

Most fireplace inserts have rotating, made of cast iron flue, feet for adjusting the height of the fireplace and leveling the unevenness of the floor. There are also handles for easy transport of the fireplace.







PRIMA FIREPLACE INSERT



# PRIMA FIREPLACE INSERT



**5** years warranty



technical data:



SM: 8 kW  
ME: 12 kW  
LA: 16 kW



SM: 350 mm  
ME: 400 mm  
LA: 500 mm



SM: 185 kg  
ME: 231 kg  
LA: 263 kg



SM: 150 mm  
ME: 200 mm  
LA: 200 mm



80%



SM: 1-8 kW  
ME: 2,4-12 kW  
LA: 3,5-16 kW

dimensions of PRIMA fireplace inserts available on page 22.

The modern design of the PRIMA fireplace insert of the DEFRO Home series allows for harmony between ecology and economy while burning wood. This fireplace insert is available in three versions: SM, ME and LA. As standard, the insert is equipped with a clean glass system, secondary and primary air flow regulation with one slider and soot afterburn system. The advantage is a perforated handle that does not heat up. The fire chamber is lined with heat resistant concrete elements.

### Advantages:

- + unique vision of fire
- + modern design
- + fire chamber lined with high quality heat resistant concrete
- + system for afterburning of exhaust gases
- + high efficiency

**Warranty:** 5 years for efficient operation, 2 years for grate and heat resistant concrete. Seals are covered by one year warranty.

	PRIMA SM	PRIMA ME	PRIMA LA
nominal power	8 kW	12 kW	16 kW
heating power range	1-8 kW	2,4-12 kW	3,5-16 kW
diameter of the flue	150 mm	200 mm	200 mm
efficiency	80 %	80 %	80%
CO emission at 13% O <sub>2</sub>	0,08%	0,09%	0,09%
flue gas temperature	260°C	260°C	260°C
chimney draft	10-12 Pa	10-12 Pa	10-12 Pa
area of heated rooms	50-120 m <sup>2</sup>	50-120 m <sup>2</sup>	65-160 m <sup>2</sup>
the height of the glass	496 mm	496 mm	496 mm
the width of the glass	578 mm	745 mm	912 mm
height	1233 mm	1430 mm	1427 mm
width	679 mm	846 mm	1012 mm
depth	504 mm	506 mm	506 mm
warranty	5 years	5 years	5 years
fuel consumption	2,5 kg/h	2,5 kg/h	2,5 kg/h
weight	~185 kg	~231 kg	~263 kg

available sizes:



PRIMA SM



PRIMA ME



PRIMA LA



PRIMA „L” FIREPLACE INSERT

# PRIMA „L” FIREPLACE INSERT



**5** years  
warranty



technical data:



SML: 8 kW  
MEL: 12 kW



SML: 350 mm  
MEL: 400 mm



SML: 186 kg  
MEL: 237 kg



SML: 150 mm  
MEL: 200 mm



80 %



SML: 1-8 kW  
MEL: 2,4-12 kW

dimensions of PRIMA L fireplace inserts available on page 22.

The modern design of the PRIMA “L” fireplace insert of the DEFRO Home series allows for harmony between ecology and economy while burning wood. This fireplace insert is available in two versions: SML and MEL. As standard, the insert is equipped with a clean glass system, secondary and primary air flow regulation with one slider and soot afterburn system. The advantage is a perforated handle that does not heat up. The fire chamber is lined with heat resistant concrete elements. Left or right side glazing - specify when ordering the fireplace insert.

### Advantages:

- + unique vision of fire
- + modern design
- + fire chamber lined with high quality heat resistant concrete
- + system for afterburning of exhaust gases
- + high efficiency

**Warranty:** 5 years for efficient operation, 2 years for grate and heat resistant concrete. Seals are covered by one year warranty.

	PRIMA SML	PRIMA MEL
nominal power	8 kW	12 kW
heating power range	1-8 kW	2,4-12 kW
diameter of the flue	150 mm	200 mm
efficiency	80 %	80 %
CO emission at 13% O <sub>2</sub>	0,1%	0,09%
flue gas temperature	260°C	250°C
chimney draft	10-12 Pa	10-12 Pa
area of heated rooms	50-120 m <sup>2</sup>	50-120 m <sup>2</sup>
the height of the glass	496 mm	496 mm
the width of the glass	698 mm	865 mm
height	1237 mm	1430 mm
width	751 mm	918 mm
depth	506 mm	506 mm
warranty	5 years	5 years
fuel consumption	2,5 kg/h	2,5 kg/h
weight	~186 kg	~237 kg

available sizes:



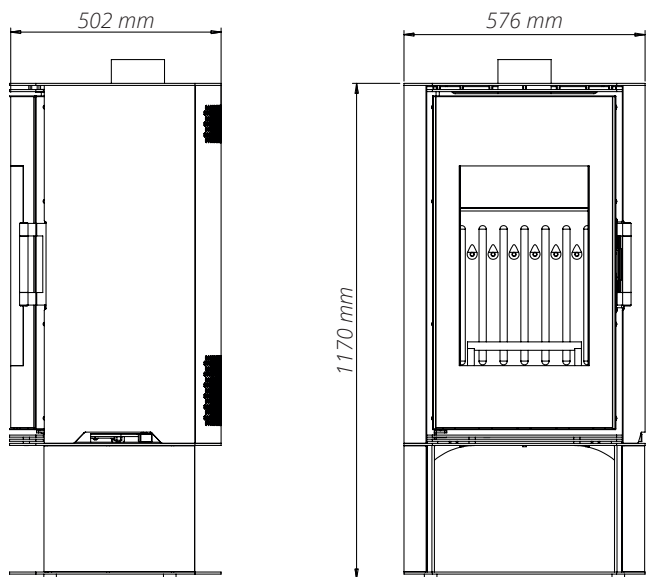
PRIMA SML



PRIMA MEL



**5** years warranty



technical data:



available colours:



dimensions of ORBIS stoves available on page 23.

Free standing wood stove ORBIS from the newest DEFRO Home collection with semicircular glass creates a unique impression of coziness and warmth. The compact and timeless steel construction of the stove is aimed at the interior of a strong character and unique styling. ORBIS available in three versions: ORBIS LOG - with niche for wood, ORBIS BOX in compact housing with functional drawer and ORBIS TOP - on the foot.

### Advantages:

- + modern vitroc ceramic glass with screen printing
- + bent glass
- + modern design
- + fire chamber lined with high quality heat resistant concrete
- + version of freestanding stove in three options: Log, Top and Box
- + system for afterburning of exhaust gases
- + high efficiency

**Warranty:** 5 years for efficient operation, 2 years for grate and heat resistant concrete. Seals are covered by one year warranty.

	ORBIS LOG	ORBIS BOX	ORBIS TOP
nominal power	9 kW	9 kW	9 kW
heating power range	1,6-9 kW	1,6-9 kW	1,6-9 kW
diameter of the flue	150 mm	150 mm	150 mm
efficiency	83%	83%	83%
CO emission at 13% O <sub>2</sub>	0,08%	0,08%	0,08%
flue gas temperature	280°C	280°C	280°C
chimney draft	10-12 Pa	10-12 Pa	10-12 Pa
area of heated rooms	80-110 m <sup>2</sup>	80-110 m <sup>2</sup>	80-110 m <sup>2</sup>
the height of the glass	790 mm	790 mm	790 mm
the width of the glass	429,3 mm	429,3 mm	429,3 mm
height	1184 mm	1184 mm	1170 mm
width	576 mm	576 mm	576 mm
depth	502 mm	502 mm	502 mm
distance to the axis of the flue	199 mm	199 mm	199 mm
warranty	5 years	5 years	5 years
weight	~155 kg	~160 kg	~150 kg

other versions:



ORBIS LOG



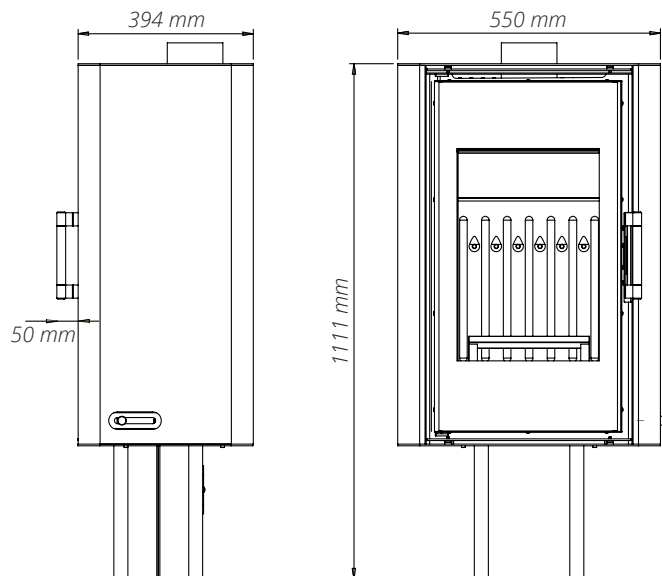
ORBIS BOX



ORBIS TOP



**5** years warranty



technical data:



available colours:



dimensions of SOLUM stoves available on page 23.

Excellent element of interior design and functional device in one. SOLUM stove impresses with its simplicity and unique design. A modern glass with a steel body create a compact shape. Original Polish design and technological proficiency of DEFRO included in one product. Stove is available in three versions: SOLUM in compact housing, TOP- on top and LOG version with niche for wood.

**Advantages:**

- + modern vitroc ceramic glass with screen printing
- + fire chamber lined with high quality heat resistant concrete
- + system for afterburning of exhaust gases
- + stainless steel elements
- + precise air delivery
- + stove available in three options: Solum, Top, Log

**Warranty:** 5 years for efficient operation, 2 years for grate and heat resistant concrete. Seals are covered by one year warranty.

other versions:



SOLUM



SOLUM TOP



SOLUM LOG

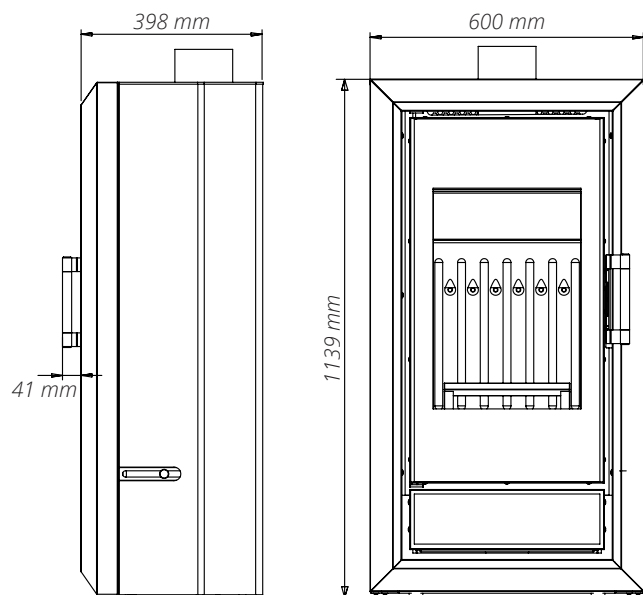
	SOLUM	SOLUM TOP	SOLUM LOG
nominal power	9 kW	9 kW	9 kW
heating power range	1,6-9 kW	1,6-9 kW	1,6-9 kW
diameter of the flue	150 mm	150 mm	150 mm
efficiency	83%	83%	83%
CO emission at 13% O <sub>2</sub>	0,08%	0,08%	0,08%
flue gas temperature	280°C	280°C	280°C
chimney draft	10-12 Pa	10-12 Pa	10-12 Pa
area of heated rooms	80-110 m <sup>2</sup>	80-110 m <sup>2</sup>	80-110 m <sup>2</sup>
the height of the glass	797 mm	797 mm	797 mm
the width of the glass	421 mm	421 mm	421 mm
height	1124 mm	1111 mm	1139 mm
width	550 mm	550 mm	550 mm
depth	394 mm	394 mm	394 mm
distance to the axis of the flue	131,5 mm	131 mm	132 mm
warranty	5 years	5 years	5 years
weight	~175 kg	~170 kg	~180 kg



IGNIS



**5** years warranty



technical data:

**kW** 9 kW

300 mm

165 kg

150 mm

83%

**<kW>** 1,6-9 kW

available colours:



dimensions of IGNIS stove available on page 23.



The design that will change any interior. Modern looking IGNIS stove from the new DEFRO Home collection. Vertical door glass gives a beautiful view of the fire. Eye-catching bends on the front of the stove form a frame around the visible fireplace, creating warm impression. Modern and compact housing emphasizes the beauty and functionality of this model.

**Advantages:**

- + modern vitroc ceramic glass with screen printing
- + fire chamber lined with high quality heat resistant concrete
- + system for afterburning of exhaust gases
- + high efficiency
- + stainless steel elements
- + adjustable feet
- + precise air delivery

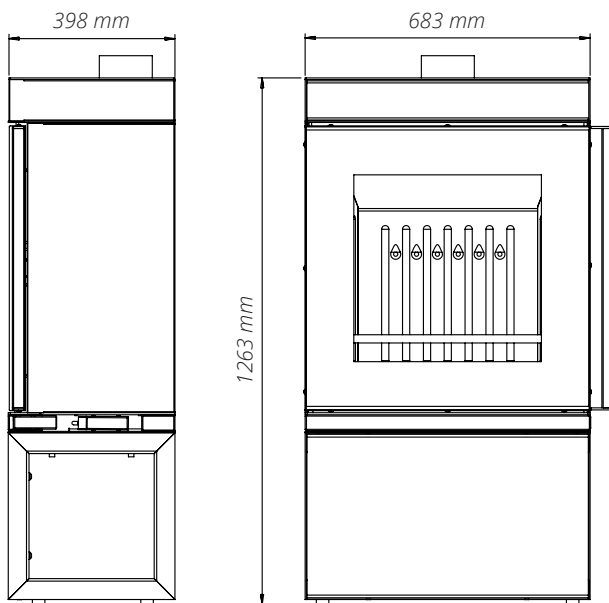
**Warranty:** 5 years for efficient operation, 2 years for grate and heat resistant concrete. Seals are covered by one year warranty.

	IGNIS
nominal power	9 kW
heating power range	1,6-9 kW
diameter of the flue	150 mm
efficiency	83%
CO emission at 13% O <sub>2</sub>	0,08%
flue gas temperature	280°C
chimney draft	10-12 Pa
area of heated rooms	80-110 m <sup>2</sup>
the height of the glass	797 mm
the width of the glass	421 mm
height	1139 mm
width	600 mm
depth	398 mm
distance to the axis of the flue	132 mm
warranty	5 years
weight	~165 kg



CUBE

# CUBE



**5** years  
warranty



technical data:



12 kW



300 mm



230 kg



150 mm



83%



2,4-12 kW

dimensions of CUBE stove available on page 23.



Inspired by modern design CUBE wood burning stove from DEFRO Home collection hides a high-powered body. The front made of high-quality glass creates a minimalistic view matching with the architecture of the modern interior. Thanks to its size and simple shapes it will perfectly meet the requirements of many customers. The stove is equipped with a wood storage niche that perfectly matches the character of CUBE.

### Advantages:

- + large combustion chamber
- + modern vitroc ceramic glass with screen printing
- + fire chamber lined with high quality heat resistant concrete
- + system for afterburning of exhaust gases
- + high efficiency
- + stainless steel elements
- + unique vision of fire

**Warranty:** 5 years for efficient operation, 2 years for grate and heat resistant concrete. Seals are covered by one year warranty.

nominal power	12 kW
heating power range	2,4-12 kW
diameter of the flue	150 mm
efficiency	83%
CO emission at 13% O <sub>2</sub>	0,08%
flue gas temperature	280°C
chimney draft	10-12 Pa
area of heated rooms	100-130 m <sup>2</sup>
the height of the glass	674 mm
the width of the glass	678 mm
height	1263 mm
width	683 mm
depth	398 mm
distance to the axis of the flue	118 mm
warranty	5 years
weight	~230 kg

# PELLET STOVE



**2** years warranty



technical data:



available colours:



dimensions of PELLET STOVE stove available on page 23.

Every year the pellet units are entering the fireplace market more and more. With its experience, DEFRO is expanding its offer by another product, namely pellet stove. For the sake of ecology, natural environment, economy and comfort, this solution is becoming increasingly popular and is an alternative to classic fireplaces. The offered stove will suit any modern interior. It is made in a very accurate way and with the best materials. The clean burning of the pellet guarantees high efficiency of the stove. Heat recovery reaches 90%, and the level of emissions of gases and pollutants is one of the lowest in the market.

**Warranty:** 2 years for efficient operation.

	PELLET
nominal power	9 kW
heating power range	4-9 kW
diameter of the flue	80 mm
efficiency	91,5%
CO emission at 13% O <sub>2</sub>	0,03%
flue gas temperature	140°C
chimney draft	10-12 Pa
area of heated rooms	90-120 m <sup>2</sup>
the height of the glass	710 mm
the width of the glass	421 mm
height	1118 mm
width	558 mm
depth	551 mm
distance to the axis of the flue	152 mm
warranty	2 years
weight	~150 kg

available colours:



## ADDITIONAL EQUIPMENT

RT-08OM controller



**EQUIPMENT:**

- One flue gas temperature sensor
- The air supply damper (tight)
- Mounting box for flush mounting
- Graphic display

**CAN BE CONNECTED:**

- Second flue gas temperature sensor
- Open door sensor
- carbon monoxide sensor
- Servomechanism of the chimney flap
- exhaust fan or thrust generator

**BASIC CONTROL FUNCTIONS:**

- Smooth throttle control - Stabilization and elongation of the combustion process in the fireplace
- Informing about the necessity to add fuel
- Prevention of overheating of the hearth
- Preventing the cooling of the hearth after finishing work
- Cooperation with carbon monoxide sensor
- Co-operation with door sensor
- Memory in case of power failure
- Emergency throttle opening in case of power failure
- Cooperation with the chimney flap servo (eg Moritz's flap)
- Cooperation with an external device

RT-08OM Graphic Controller



**EQUIPMENT:**

- One flue gas temperature sensor
- The air supply damper (tight)
- Mounting box for flush mounting
- Graphic display

**CAN BE CONNECTED:**

- Second flue gas temperature sensor
- Open door sensor
- carbon monoxide sensor
- Servomechanism of the chimney flap
- exhaust fan or thrust generator

**BASIC CONTROL FUNCTIONS:**

- Smooth throttle control - Stabilization and elongation of the combustion process in the fireplace
- Informing about the necessity to add fuel
- Prevention of overheating of the hearth
- Preventing the cooling of the hearth after finishing work
- Cooperation with carbon monoxide sensor
- Co-operation with door sensor
- Memory in case of power failure
- Emergency throttle opening in case of power failure
- Cooperation with the chimney flap servo (eg Moritz's flap)
- Cooperation with an external device

## DECORATIVE FRAMES

Modern steel decorative frames for PRIMA and PRIMA L fireplace inserts. The decorative frame makes it easy to finish the connection of the fireplace housing with fireplace door.

The main advantage of the frame is the ability to be quickly and easily assembled. Assembly can be done by yourself, without the need for specialized tools.

The decorative frame is painted with high temperature resistant paint, which makes the whole composition perfect, aesthetically and very elegantly looking.

**Characteristic:**

material: black steel  
thickness: 2 mm

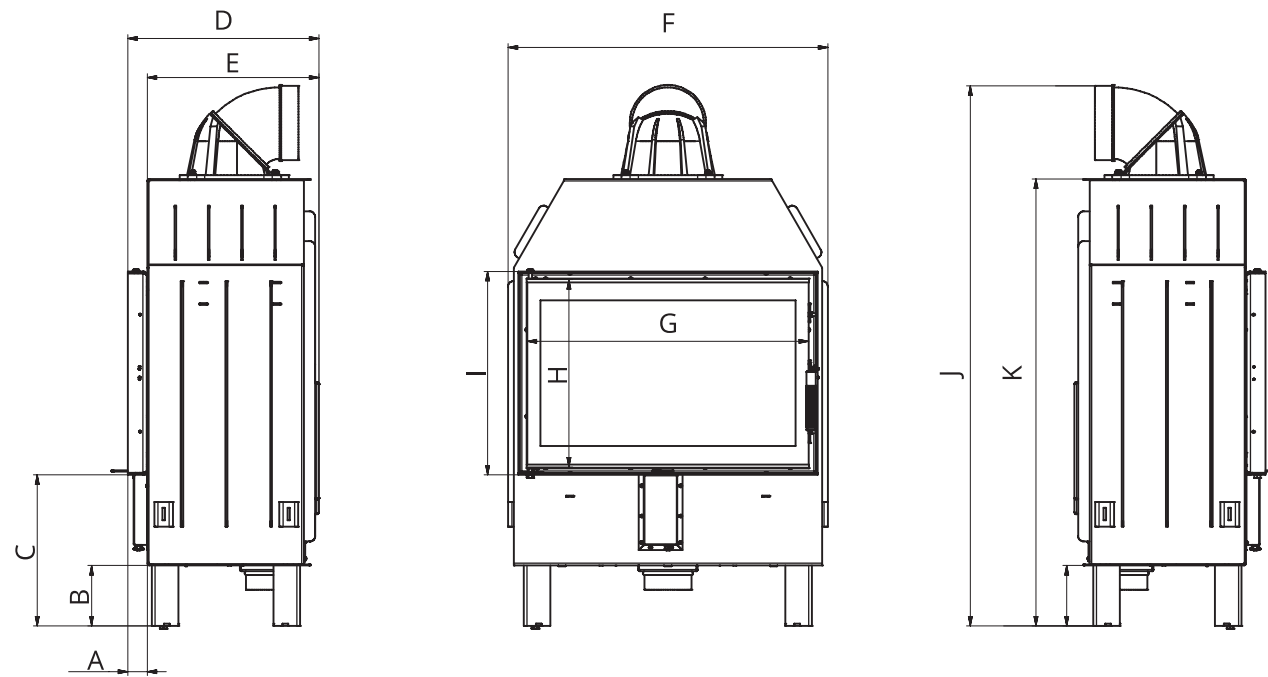


FRAME FOR PRIMA L  
FIREPLACE INSERT



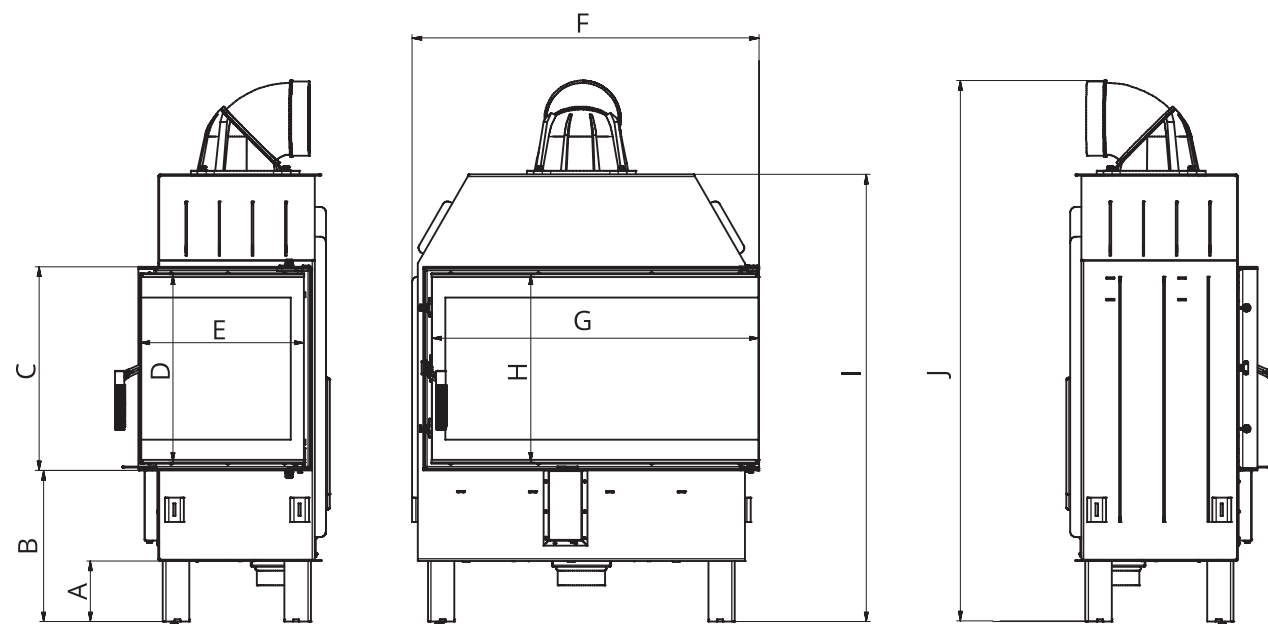
FRAME FOR PRIMA  
FIREPLACE INSERT

# DIMENSIONS OF FIREPLACE INSERTS



DIMENSIONS OF PRIMA INSERTS IN MM			
Dimension	PRIMA SM	PRIMA ME	PRIMA LA
A	50	52	52
B	160	160	160
C	400	400	400
D	504	506	506
E	454	454	454
F	679	846	1012
G	578	745	912
H	496	496	496
I	539	539	539
J	1233*	1430	1427
K	1190	1184	1184

\* In the Prima SM model there is a vertical flue without rotating elements. Given height to the upper edge of the exhaust outlet.



DIMENSIONS OF PRIMA L INSERTS IN MM		
Dimension	PRIMA SML	PRIMA MEL
A	160	160
B	400	400
C	539	539
D	496	496
E	434	434
F	751	918
G	698	865
H	496	496
I	1184	1184
J	1237	1430

\* In the Prima SML model there is a vertical flue without rotating elements. Given height to the upper edge of the exhaust outlet.

# TECHNICAL DATA OF FREESTANDING FIREPLACES



name	ORBIS			SOLUM			IGNIS	CUBE	PELLET
model	ORBIS TOP	ORBIS LOG	ORBIS BOX	SOLUM TOP	SOLUM LOG	SOLUM	-	-	-
nominal power	9 kW	9 kW	9 kW	9 kW	9 kW	9 kW	9 kW	12 kW	9 kW
heating power range	1,6-9 kW	1,6-9 kW	1,6-9 kW	1,6-9 kW	1,6-9 kW	1,6-9 kW	1,6-9 kW	2,4-12 kW	4-9 kW
diameter of the flue	150 mm	150 mm	150 mm	150 mm	150 mm	150 mm	150 mm	150 mm	80 mm
efficiency	83%	83%	83%	83%	83%	83%	83%	83%	91,5%
CO emission at 13% O <sub>2</sub>	0,08%	0,08%	0,08%	0,08%	0,08%	0,08%	0,08%	0,08%	0,08%
flue gas temperature	280°C	280°C	280°C	280°C	280°C	280°C	280°C	280°C	1400°C
chimney draft	10-12 Pa	10-12 Pa	10-12 Pa	10-12 Pa	10-12 Pa	10-12 Pa	10-12 Pa	10-12 Pa	10-12 Pa
area of heated rooms (1kWx10m <sup>2</sup> )	80-110 m <sup>2</sup>	80-110 m <sup>2</sup>	80-110 m <sup>2</sup>	80-110 m <sup>2</sup>	80-110 m <sup>2</sup>	80-110 m <sup>2</sup>	80-110 m <sup>2</sup>	100-130 m <sup>2</sup>	80-110 m <sup>2</sup>
the height of the glass	790 mm	790 mm	790 mm	797 mm	797 mm	797 mm	797 mm	674 mm	797 mm
the width of the glass	429,3 mm	429,3 mm	429,3 mm	421 mm	421 mm	421 mm	421 mm	678 mm	421 mm
height	1170 mm	1184 mm	1184 mm	1111 mm	1139 mm	1124 mm	1139 mm	1263 mm	1139 mm
width	576 mm	576 mm	576 mm	550 mm	550 mm	550 mm	600 mm	683 mm	600 mm
depth	502 mm	502 mm	502 mm	394 mm	394 mm	394 mm	398 mm	398 mm	398 mm
distance to the axis of the flue	199 mm	199 mm	199 mm	131 mm	132 mm	131,5 mm	132 mm	118 mm	132 mm
warranty	5 years	5 years	5 years	5 years	5 years	5 years	5 years	5 years	2 years
fuel consumption	2,5 kg/h	2,5 kg/h	2,5 kg/h	2,5 kg/h	2,5 kg/h	2,5 kg/h	2,5 kg/h	3,5 kg/h	2,5 kg/h
weight	150 kg	155 kg	160 kg	170 kg	180 kg	175 kg	165 kg	230 kg	150 kg



# DEFRO HOME

DEFRO Spółka z ograniczoną odpowiedzialnością Spółka komandytowa

00-403 Warszawa, ul. Solec 24/253

Address for correspondence:  
26-067 Strawczyn, Ruda Strawczyńska 103A  
tel. 00 48 41 303 80 85, mail: [biuro@defro.pl](mailto:biuro@defro.pl)

Catalogue 01/2017, Catalogue validity: 15.11.2017-28.02.2017